

How to setup a proxy server on an Apple computer (Mac)

1. Select “System Preferences” as in Figure 1.



Figure 1

2. A new window will appear on the desktop. Select “Network” as in Figure 2.



Figure 2

3. Select “Ethernet” to set the proxy, then click the “Advanced” button as in Figure 3.

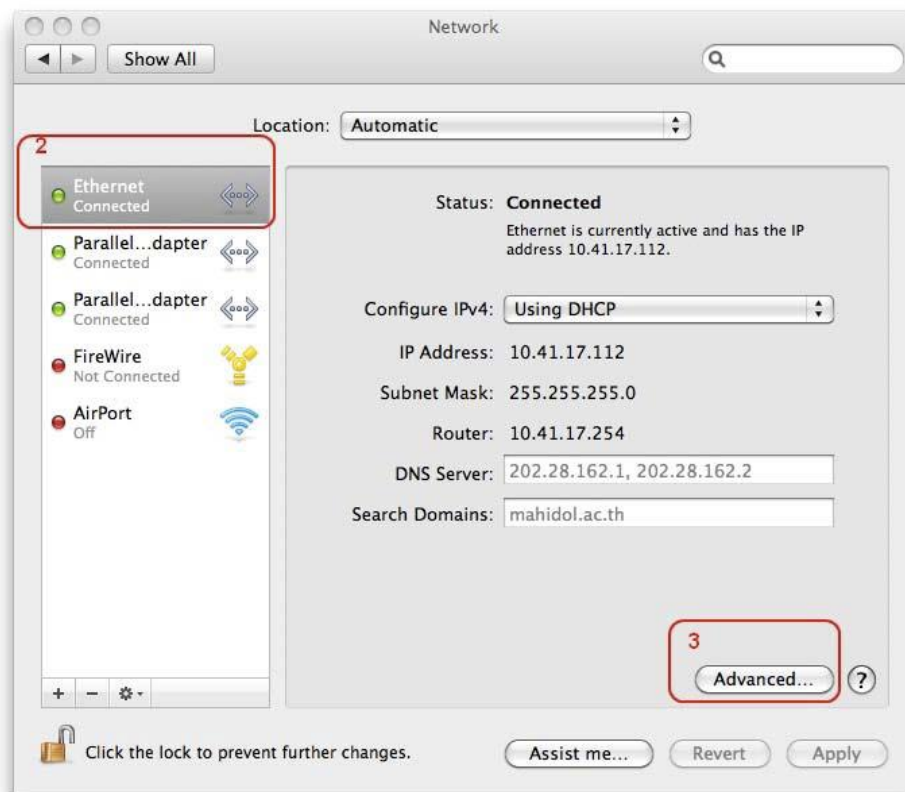


Figure 3

4. A new window will appear on the screen and show the IP address. Choose “Proxies” as in Figure 4.

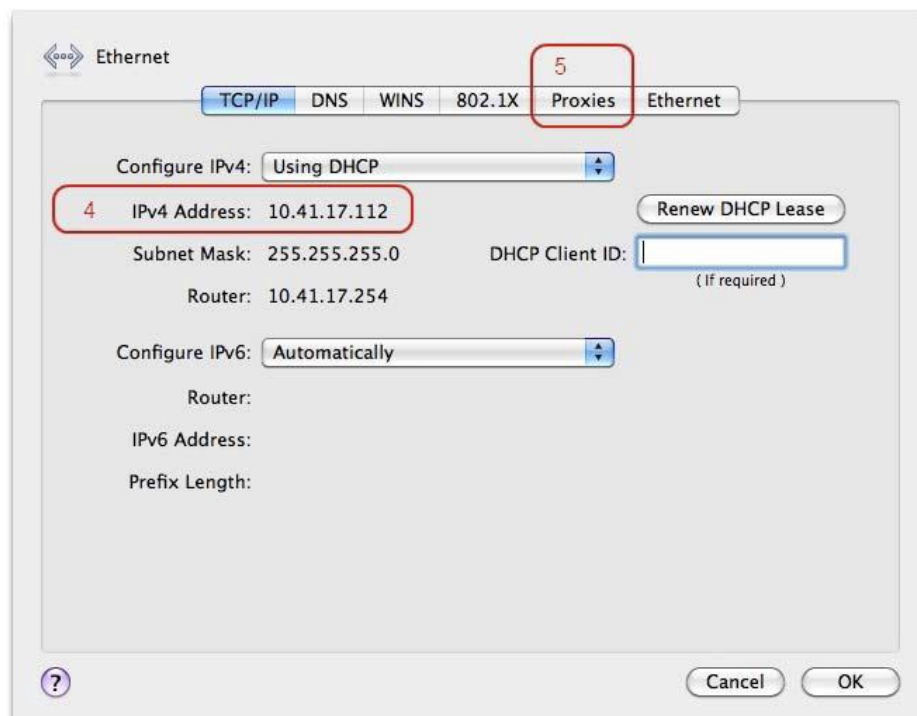


Figure 4

5. Select “Automatic Proxy Configuration” and enter this proxy: <http://proxy.mahidol>. After the proxy address has been entered, click the “OK” button as in Figure 5.

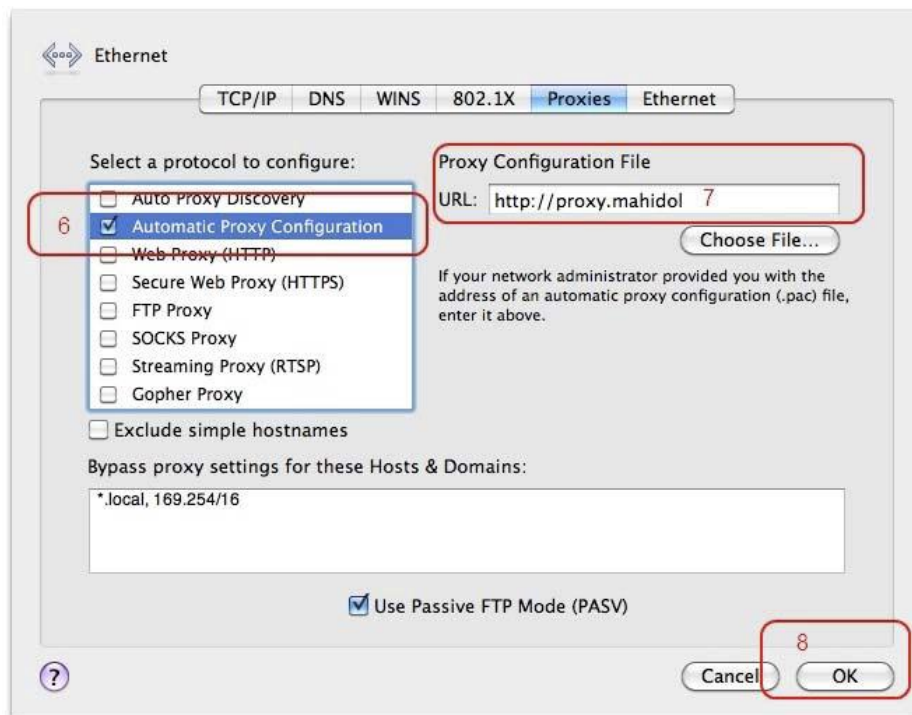


Figure 5

6. Lastly, click the “Apply” button as in Figure 6. You are now ready to test the internet connection.

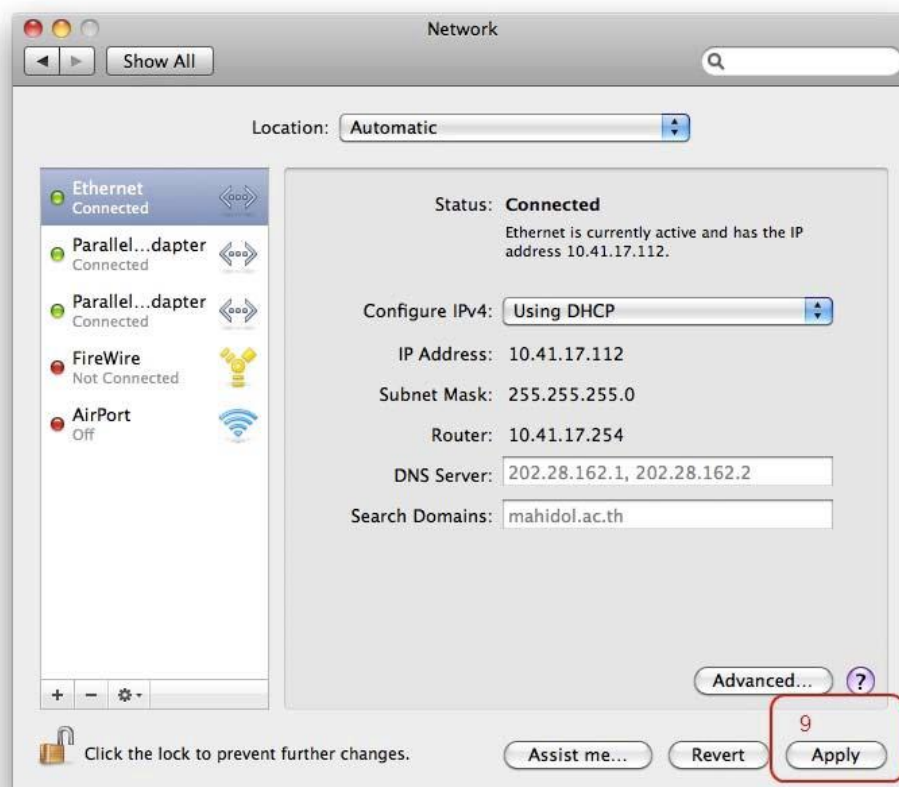


Figure 6