



Mahidol University
International College

PREPARATION CENTER FOR LANGUAGES AND MATHEMATICS
PC/MP REGISTRATION & PAYMENT FOR Q3/2026

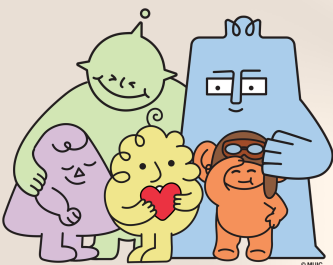
Study period:
June 15 - August 21, 2026

Please choose
to read the
information
according to
your type:

PC NEW STUDENT

MP NEW STUDENT

**PC CURRENT
STUDENT**



02-700-5000 ext. 2131-2137
089-550-7478, 083-995-7107



icpc@mahidol.ac.th



LINE official account
@pcmuicofficial

» PC office hours: **Monday - Friday (8:00 a.m. - 5:00 p.m.)** «

